

JOB:

LOCATION:

ARCHITECT:

MECH. ENG.:

CONTRACTOR:

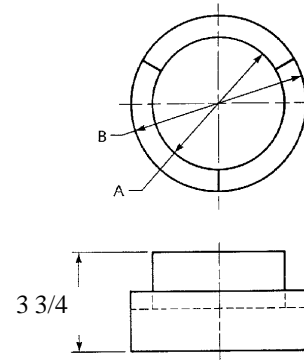
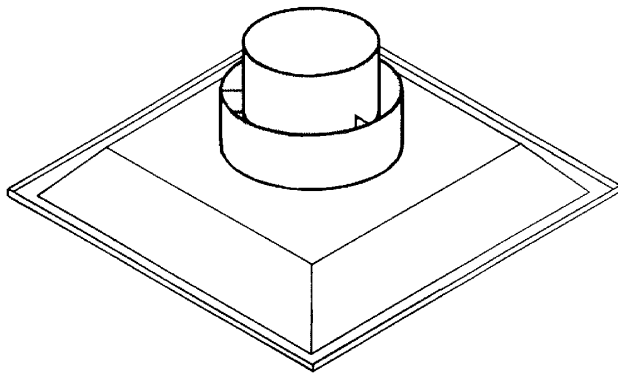
DATE:

# Relief Ring (Static Pressure Control)

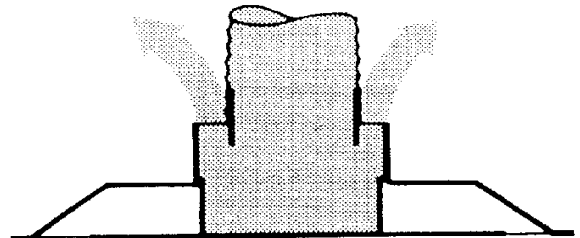


412 NORTH SIXTH AVENUE  
TUCSON, AZ 85705 520 622-7898

## Dimensions



Model Inlet No.	A	B	Duct Size	Unit Size
RR06/10	5 7/8	9 15/16	6	10
RR08/12	7 7/8	11 15/16	8	12
RR10/14	9 7/8	13 15/16	10	14
RR12/14	10 7/8	14 15/16	12	14



### Selection

Selecting the diffuser and relief ring is done by first determining the maximum CFM required and the corresponding supply air duct diameter. The duct diameter will determine the relief ring and corresponding inlet size.

### Application

The RR Series relief ring is used on systems that do not have a means to control system static pressure. The relief ring allows supply air to be discharged into the ceiling plenum as the damper on the VAV diffuser closes. Relief rings are most commonly used on unitary package equipment and heat pump systems. Relief rings used in conjunction with a return air thermostat provides an effective, simple and economical control system with individual room temperature control.

### Installation

Installation is simple and easy. The relief ring fits snugly on the unit inlet collar. The supply air duct will be connected to the relief ring inlet collar. Form No. RR94-730 Eff. Date; 5/94