

JOB:

LOCATION:

ARCHITECT:

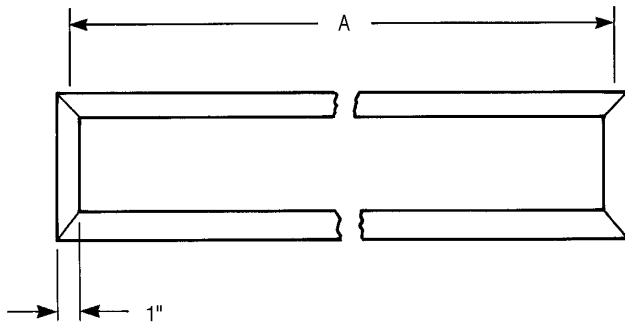
MECH ENG:

CONTRACTOR:

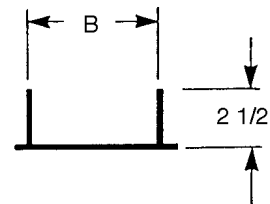
DATE:

# FPTLB Series Vari-Flow

Plaster Frame  
24"-36"-48"



*Face View*



*Side View*

Model No.	A	B
FTLB24	24 3/4	5 1/8
FTLB36	36 3/4	5 1/8
FTLB48	48 3/4	5 1/8

**A & B=Rough ceiling opening (All dimensions in inches)**

### **Application**

The FPVFL linear plaster frame is used with VFL, EFL, and RAL series linear diffusers in plastered, sheet rock, and hard surface ceilings.

### **Installation**

The frame is installed in a rough opening and attached through the frame with screws or nails (see illustration of typical installation). The frame may also be installed and supported by suspension wires. The method of attachment may vary with the particular construction. The surface of the frame has mitered corners for appearance.

Form #FPTI B94-716