

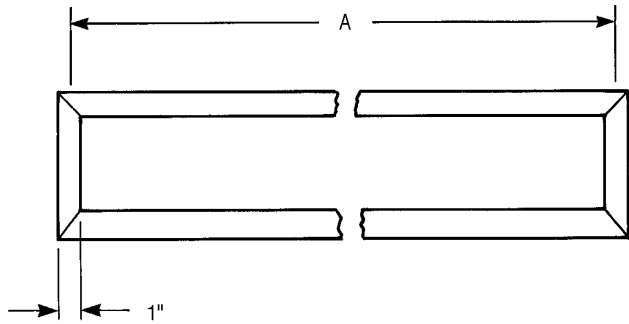
JOB:
 LOCATION:
 ARCHITECT:
 MECH ENG:
 CONTRACTOR:
 DATE:

FPVFL Series Vari-Flow

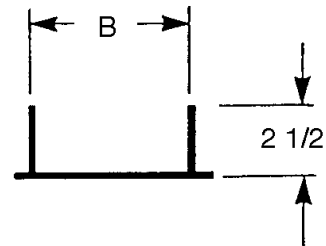
Linear Plaster Frame



Dimensions



Face View



Side View

Model No.	A	B
?? † FPVFL241	24	2 3/4
?? † FPVFL242	24	5 1/2
?? † FPVFL243	24	8 1/4
?? † FPVFL481	48	2 3/4
?? † FPVFL482	48	5 1/2
?? † FPVFL483	48	8 1/4

A & B=Rough ceiling opening (All dimensions in inches)

Application

The FPVFL linear plaster frame is used with VFL, EFL, SAL, and RAL series linear diffusers in plastered, sheet rock, and hard surface ceilings.

Installation

The frame is installed in a rough opening and attached through the frame with screws or nails. The frame may also be installed and supported by suspension wires. The method of attachment may vary with the particular construction. The surface of the frame has mitered corners for appearance.

Form No. FPVFL94-705 Eff. Date: 5/94